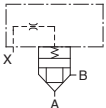
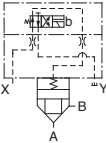
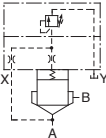
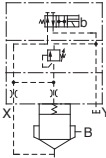




LOGIC VALVES

Valve Type	Graphic Symbols	Maximum Operating Pressure MPa	Rated Flow L/min																Page											
			1	2	3	5	10	20	30	50	100	200	300	500	1000	3000	6000													
Directional Control Logic Valves Directional and Flow Control Logic Valves		31.5	LD																16	25	32	40	50	63	80	100	G-4			
Solenoid Operated Directional Control Logic Valves			LDS																25	32	40	50	63							G-5
Relief Logic Valves			LB																16	25	32	50								G-6
Solenoid Controlled Relief Logic Valves			LBS																16	25	32	50								G-7

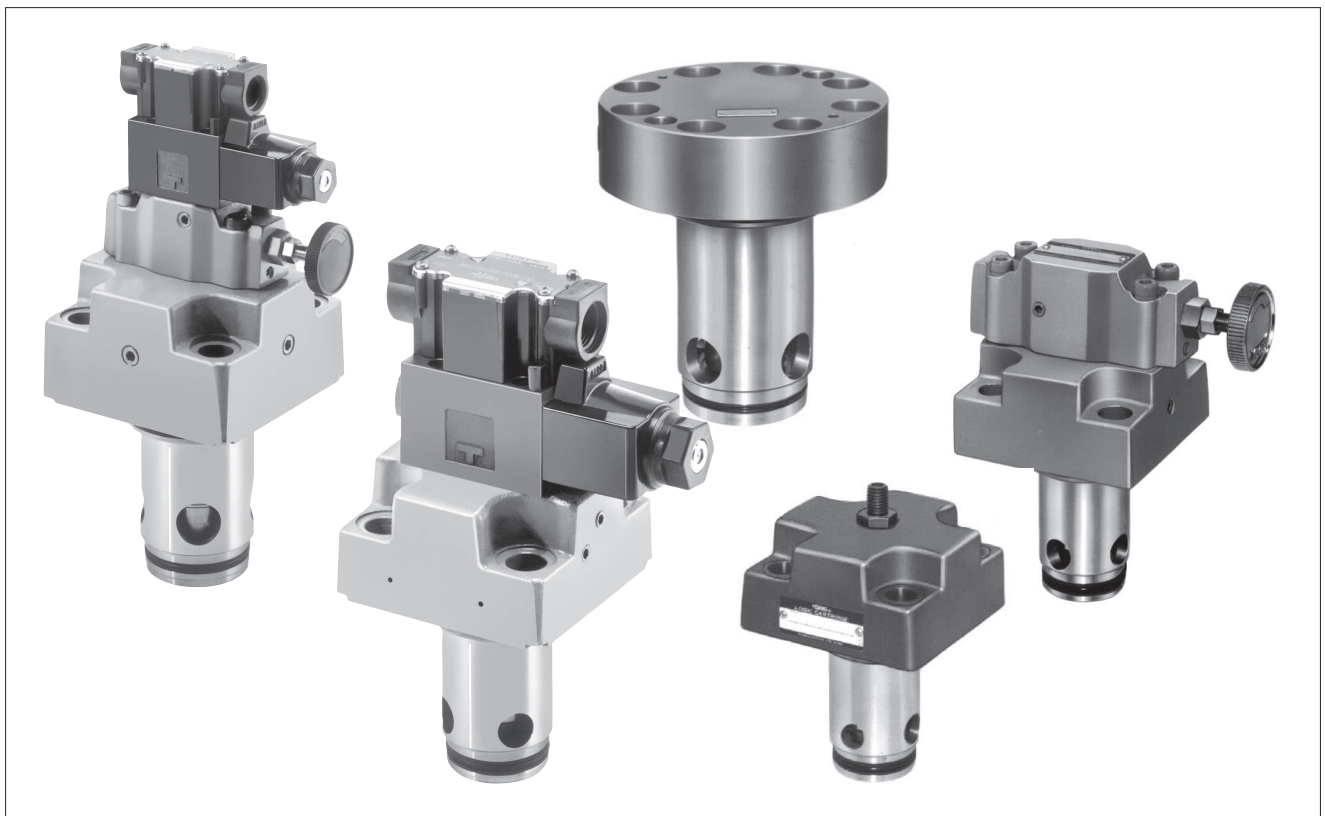
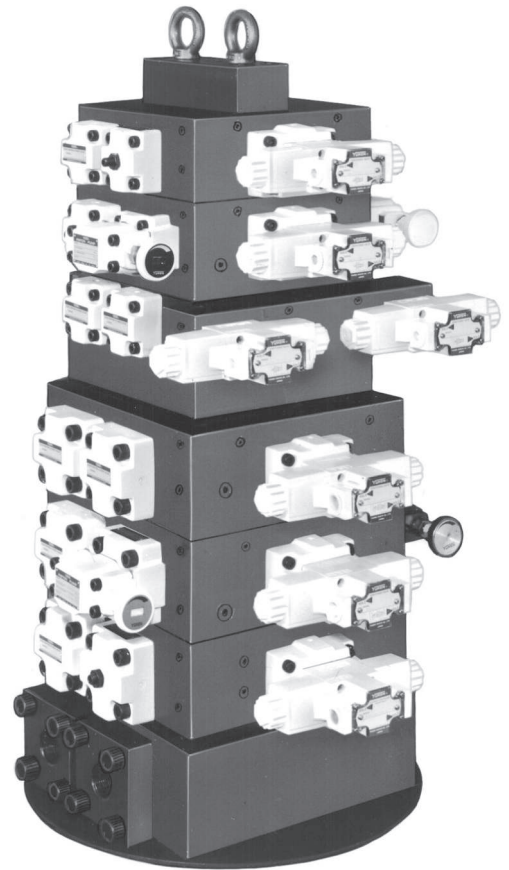
Consult Yuken when detailed material such as dimensions figures is required.

Logic Valves

Yuken Logic Valves comprise cartridge typed elements and covers with pilot passages. Various types may be combined for direction, flow rate and pressure control. Yuken Logic Valves can be incorporated in manifold blocks to form optimum integrated hydraulic circuits and compact hydraulic power units. Being a poppet type, the elements permit high-pressure, high flow rates, high speed and shockless shifting with low pressure drop. Typical applications include steel mill equipment, injection moulding machines, machine tools and so on. In addition, YUKEN's logic valves meet the cavity specifications (element insertion holes and cover mounting dimensions) of the ISO standard (ISO7368 TWO-PORT SLIP-IN CARTRIDGE VALVES CAVITIES).

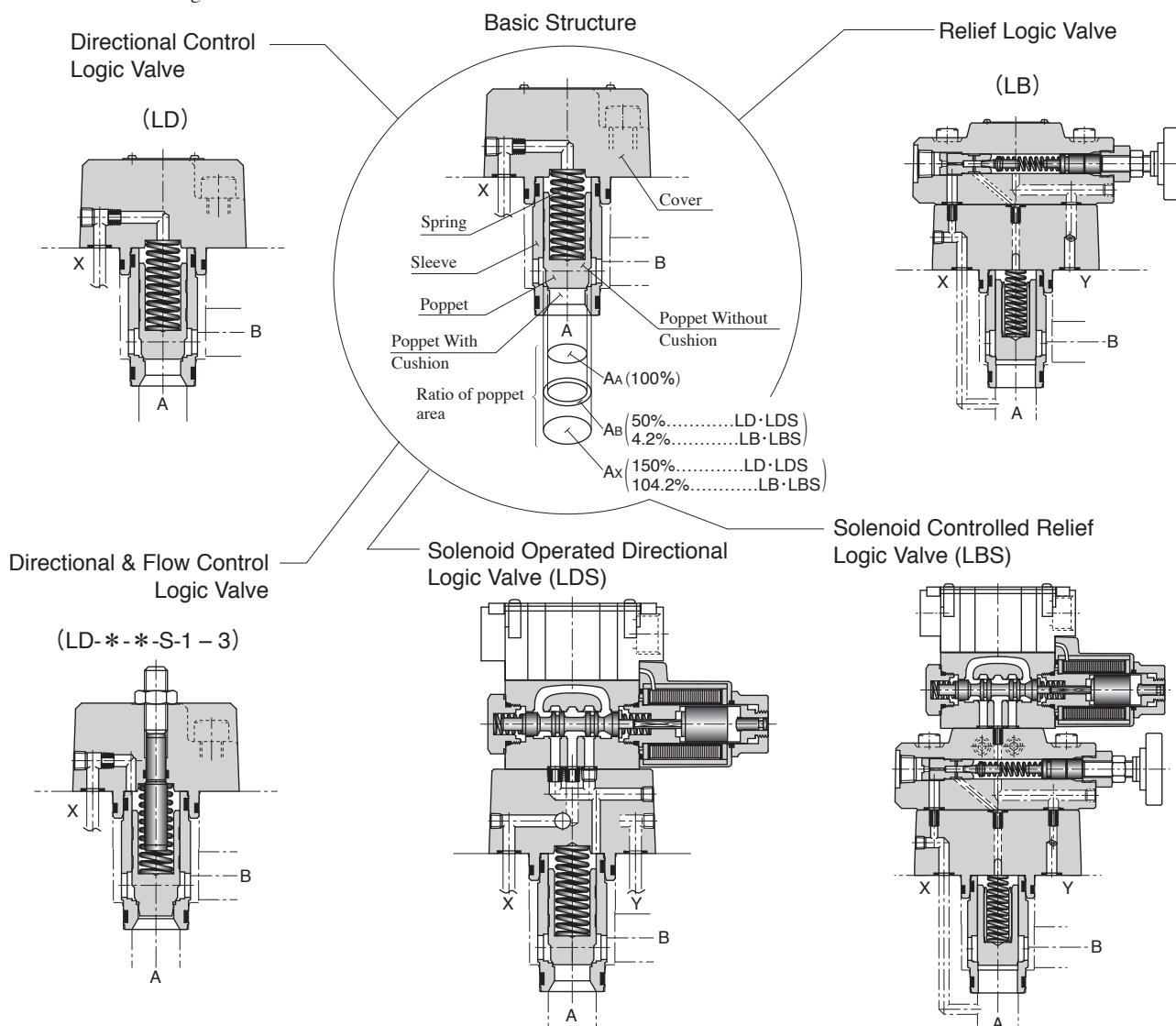
Features

- Multifunction performance in terms of direction, flow and pressure can be obtained by combining elements and covers.
- Poppet-type elements virtually eliminate internal leakage and hydraulic locking. Because there are no overlaps, response times are very high, permitting high-speed shifting.
- For high pressure, large capacity systems, optimum performance is achieved with low pressure losses.
- Since the logic valves are directly incorporated in cavities provided in blocks, the system is free from problems related to piping such as oil leakage, vibration and noise, and higher reliability is achieved.
- Multifunction logic valves permit compact integrated hydraulic systems which reduce manifold dimensions and mass and achieve lower cost conventional types.



Structure and Functions

As shown below, a logic valve consists of a cover, a sleeve, a poppet and a spring incorporated in a block. Although it is a simple two-port valve designed to open and close the poppet in accordance with the pressure signals from the pilot line, it serves as a multifunctional valve for controlling the direction, flow and pressure by controlling the pressure signals. Standard covers have several pressure signal ports (pilot ports) and control valves for control purposes are available. The covers are spigot mounted. There is no risk of oil leakage.

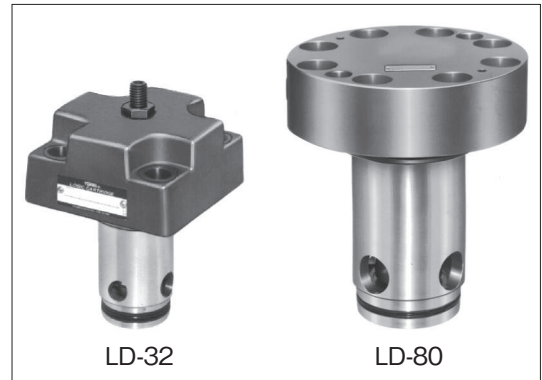


Functions, working area ratios and features

Functions	Graphic Symbols	Working area ratios (AA : AB)	Features
Direction		2 : 1	<ul style="list-style-type: none"> ● Poppet Shape Without cushion (LD_{LDS} - * - *) : High-speed shift ● With cushion (LD_{LDS} - * - *-S) : Shockless shift ● No leakage between port A and B. ● Flow A to B and B to A are possible. ● Response time and shock can be adjusted by orifice selection.
Direction and Flow			<ul style="list-style-type: none"> ● Poppet Shape With cushion (LD_{LDS} - * - *-S₃) : Flow control ● No leakage between port A to B. ● Flow A to B only is possible. ● Response time and shock can be adjusted by orifice selection.
Relief		24 : 1	<ul style="list-style-type: none"> ● Remote and unloading control is possible with vent circuit. (LB- * - *) ● Two or three pressure controls are possible in combination of solenoid operated directional valve and pilot relief valve. (LBS- * - *)

Directional Control/Directional & Flow Control Logic Valves

These valves are 2-way directional valves designed to open and close the circuits in accordance with pressure signals from the pilot lines. They are used as multifunctional valves for controlling flow directions or flow directions and rates. Standard covers are available so that optimum valves can be selected for control purposes.



Specifications

Model No.	(NOTE) Rated Flow L/min	Max. Operating Pressure MPa	Cracking Pressure MPa	Ratio of Poppet Area	Mass kg
LD-16	130	31.5	Refer to Model No. Designation	2 : 1 (Annular area 50%)	1.6
LD-25	350				3.0
LD-32	500				5.3
LD-40	850				9.1
LD-50	1400				14.8
LD-63	2100				29.8
LD-80	3400				48
LD-100	5500				86

Note: The rated flow is values with a pressure drop of 0.3 MPa, fluid viscosity 35 mm²/s.

Model Number Designation

LD-32-05-S-1-X05-12

- LD-32-05-S-1-X05-12
- Design number (LD-80,100.....11)
- Designation of orifice
- Location of orifice (see the table right)
 - None : no orifice
 - X : Pilot port X
 - Z1 : Pilot port Z1
 - S : Port leading to spring
- Cover type (See the table right)
 - None, 1, 2, 3, 4, 5
- Poppet shape★
 - None : Without cushion
 - S : With cushion
- Cracking pressure (A→B)
 - None : No Spring
 - 05 : 0.05 MPa
 - 20 : 0.2 MPa
- Valve Size : 16, 25, 32, 40, 50, 63, 80, 100
- Directional control logic valves/Directional & flow control logic valves

★Poppet shapes

The type without a cushion and the type with a cushion are both suitable for high-speed shifting and shockless shifting respectively. For directional and flow control logic valves, be sure to specify "poppet with cushions".

List of Cover Types

Cover Type Designation	Graphic Symbols	Valve Size							
		16	25	32	40	50	63	80	100
Directional Control	Standard (None)		○	○	○	○	○	○	○
	With Check Valve (4)		○	○	○	○	○	—	—
	With Shuttle Valve (5)		○	○	○	○	○	—	—
Directional & Flow Control	With Stroke Adjuster (1)		○	○	○	○	○	○	○
	With Check Valve & Stroke Adjuster (2)		○	○	○	○	○	—	—
	With Shuttle Valve & Stroke Adjuster (3)		○	○	○	○	○	—	—

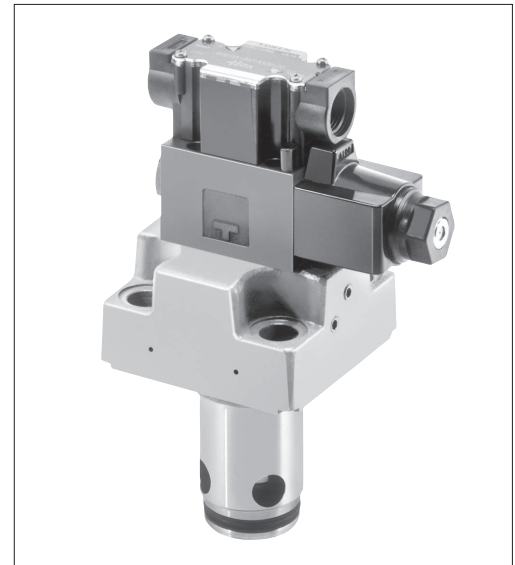
Solenoid Operated Directional Control Logic Valves

These solenoid operated directional control logic valves are composed of directional control valves and solenoid operated directional valves combined together. The solenoid operated directional valves serve to switch pilot lines and the directional control valves are used to control the direction of the main circuits. Standard covers provided with various control valves are available to provide optimum control.

Specifications

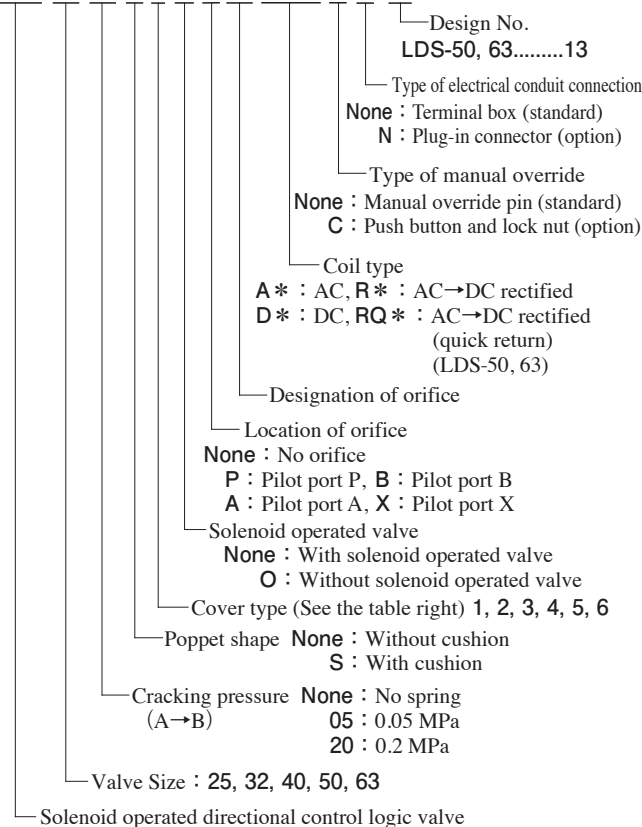
Model No.	(NOTE) Rated Flow L/min	Max. Operating Pressure MPa	Cracking Pressure MPa	Ratio of Poppet Area	Mass kg
LDS-25	350	31.5	Refer to Model No. Designation	2 : 1 (Annular area 50 %)	4.2
LDS-32	500				6.5
LDS-40	850				10.3
LDS-50	1400				18.6
LDS-63	2100				33.6

Note: The rated flow is values with a pressure drop of 0.3 MPa, fluid viscosity 35 mm²/s.



Model Number Designation

LDS-32-05-S-1-O-X 05-A100-C-N-14



Normally Open with Shuttle Valve (6)						
--------------------------------------	--	--	--	--	--	--

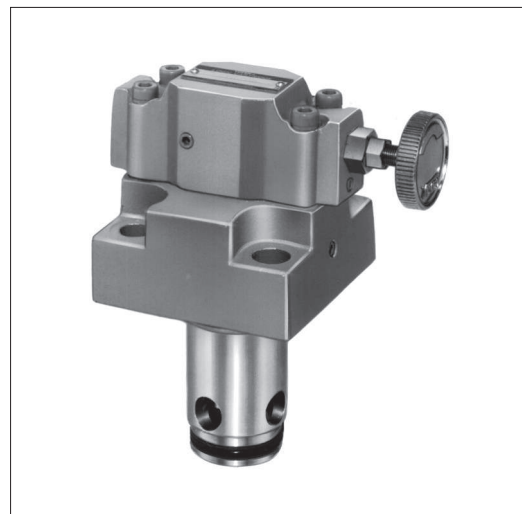
Note: In case of LDS- * - * - * - * -O (without solenoid operated valve), the graphic symbol for the solenoid operated valve is excluded.

List of Cover Types

Cover Type Designation	Graphic Symbols	Valve Size				
		25	32	40	50	63
Normally Closed (1)						
Normally Open (2)						
Normally Closed with Shuttle Valve (3)						
Normally Open with Shuttle Valve (4)						
Normally Closed with Shuttle Valve (5)						

Relief Logic Valves

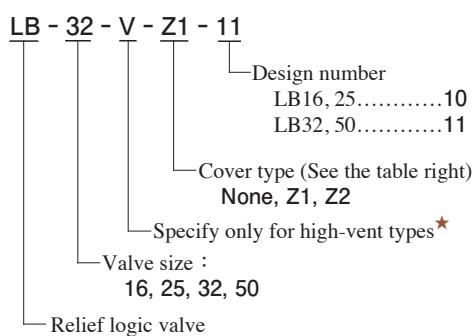
These relief logic valves are used to protect pumps and control valves from excessive pressure and control the pressures of their hydraulic lines at constant levels. With the help of vent lines (Z1 or Z2 port), they are also capable of remote and unload control.



Specifications

Model No.	Max. Operating Pressure MPa	Pres. Adj. Range MPa	Max. Flow L/min	Mass kg
LB-16-**-*-10	31.5	0.5 - 31.5	125	3.6
LB-25-**-*-10			250	4.5
LB-32-**-*-11			500	6.7
LB-50-**-*-11			1200	16.1

Model Number Designation



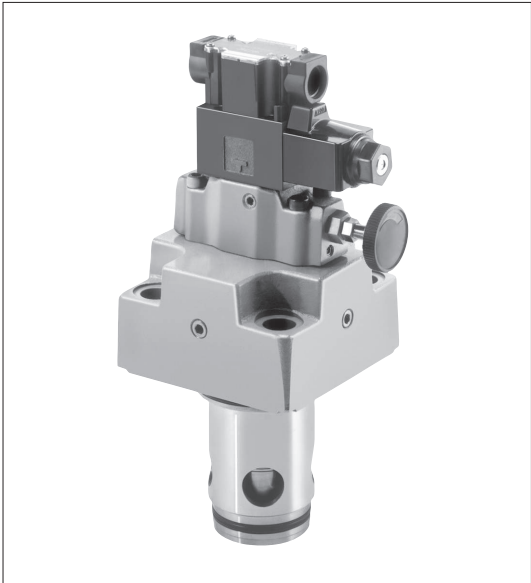
★Use high-vent pressure types if the shifting time from unloading to on-loading is reduced.

List of Cover Types

Cover Type Designation	Graphic Symbols	Valve Size			
		16	25	32	50
Standard (None)		○	○	○	○
Vent Controlled (Z1)		○	○	○	○
Vent Controlled (Z2)		○	○	○	○

Solenoid Controlled Relief Logic Valves

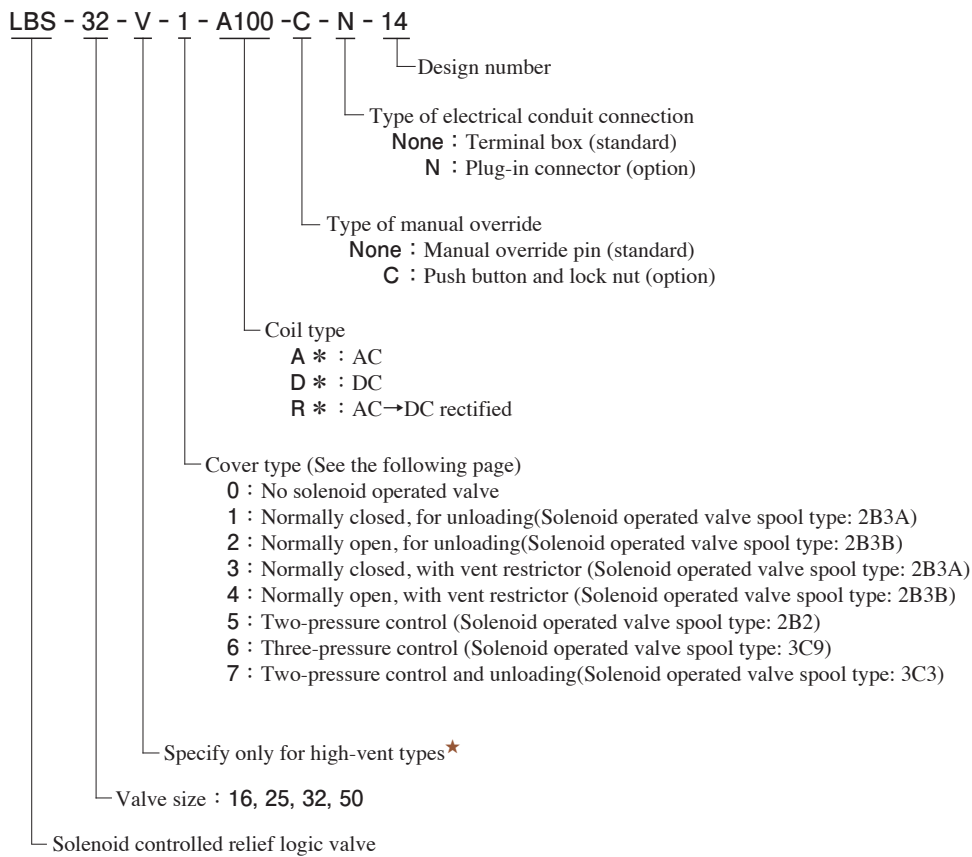
These solenoid controlled relief logic valves are composite control valves having solenoid controlled directional and pilot relief valves and vent restrictors combined together. They are used to put pumps into unloading operation, with the solenoid controlled directional valves serving to select pilot lines, or to place hydraulic system two or three pressure controls, with the pilot relief valves in action.



Specifications

Model Numbers	Max. Operating Pressure MPa	Pres. Adj. Range MPa	Max. Flow L/min	Mass kg
LBS-16-**-**-14	31.5	0.5 - 31.5	125	3.6 - 8.5
LBS-25-**-**-14			250	4.5 - 9.4
LBS-32-**-**-14			500	6.7 - 11.6
LBS-50-**-**-14			1200	16.1 - 21.0

Model Number Designation



★Use high-vent pressure types if the shifting time from unloading to on-loading is reduced.

List of Cover Type (LBS)

Cover Type Designation	Graphic Symbols	Valve Size			
		16	25	32	50
Without Solenoid Valve (0)		○	○	○	○
Normally Closed for Unloading (1)		○	○	○	○
Normally Open for Unloading (2)		○	○	○	○
Normally Closed with Vent Restrictor (3)		○	○	○	○
Normally Open with Vent Restrictor (4)		○	○	○	○
Two Pressure Control (5)		○	○	○	○

Cover Type Designation	Graphic Symbols	Valve Size			
		16	25	32	50
Three Pressure Control (6)		○	○	○	○
Two Pressure Control and Unloading (7)		○	○	○	○